



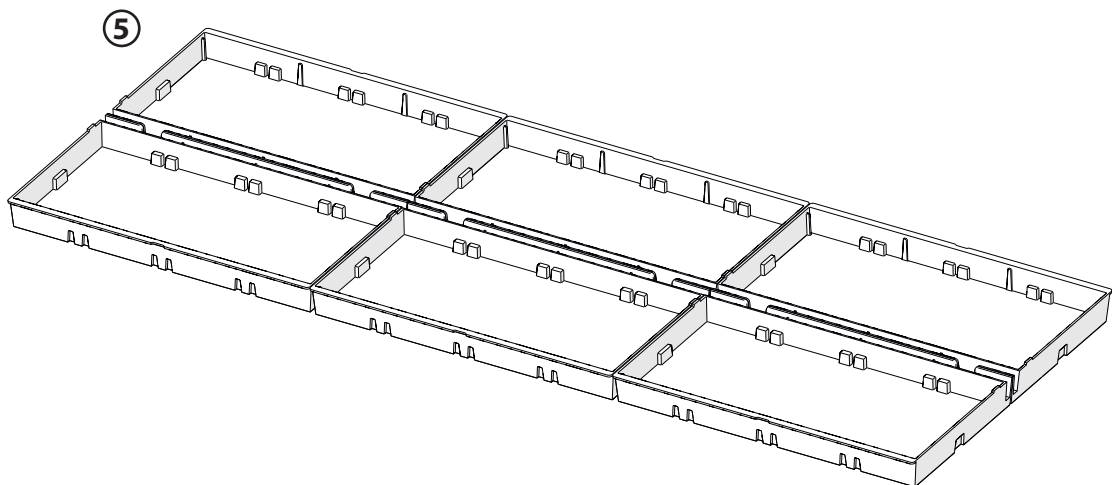
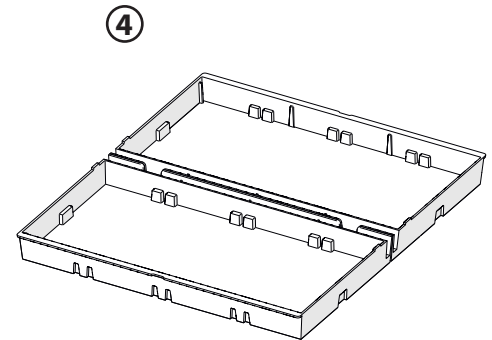
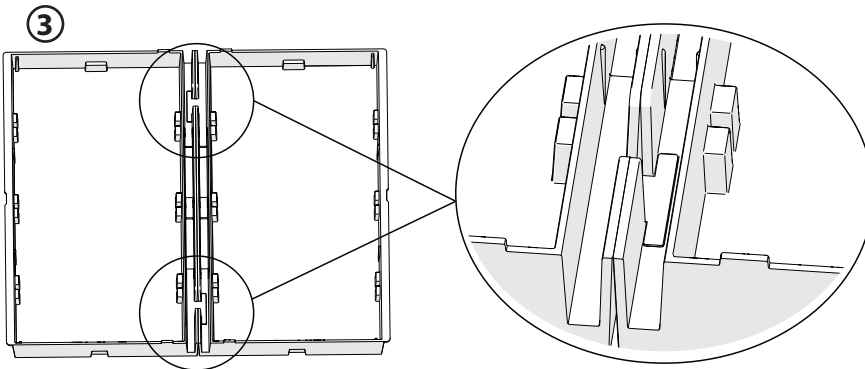
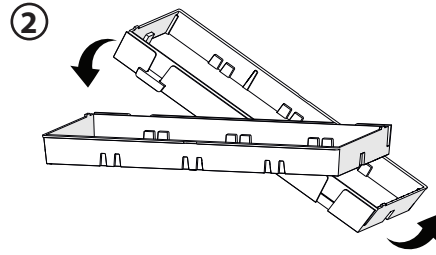
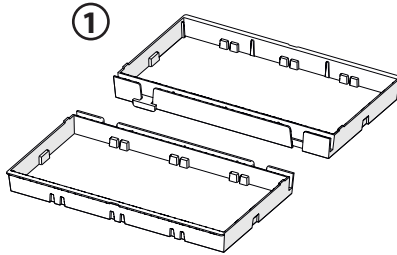
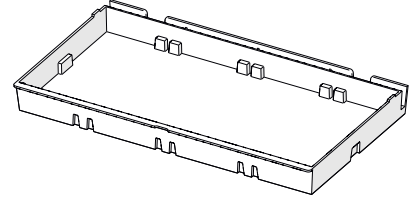
RED 2.0 CONCEPT - INSTRUCTION SHEET

Step 1 Install the trays into the shelves

Open the bulk packaging

Identify the sub-package code mac110001 - molded trays

Following the below procedure

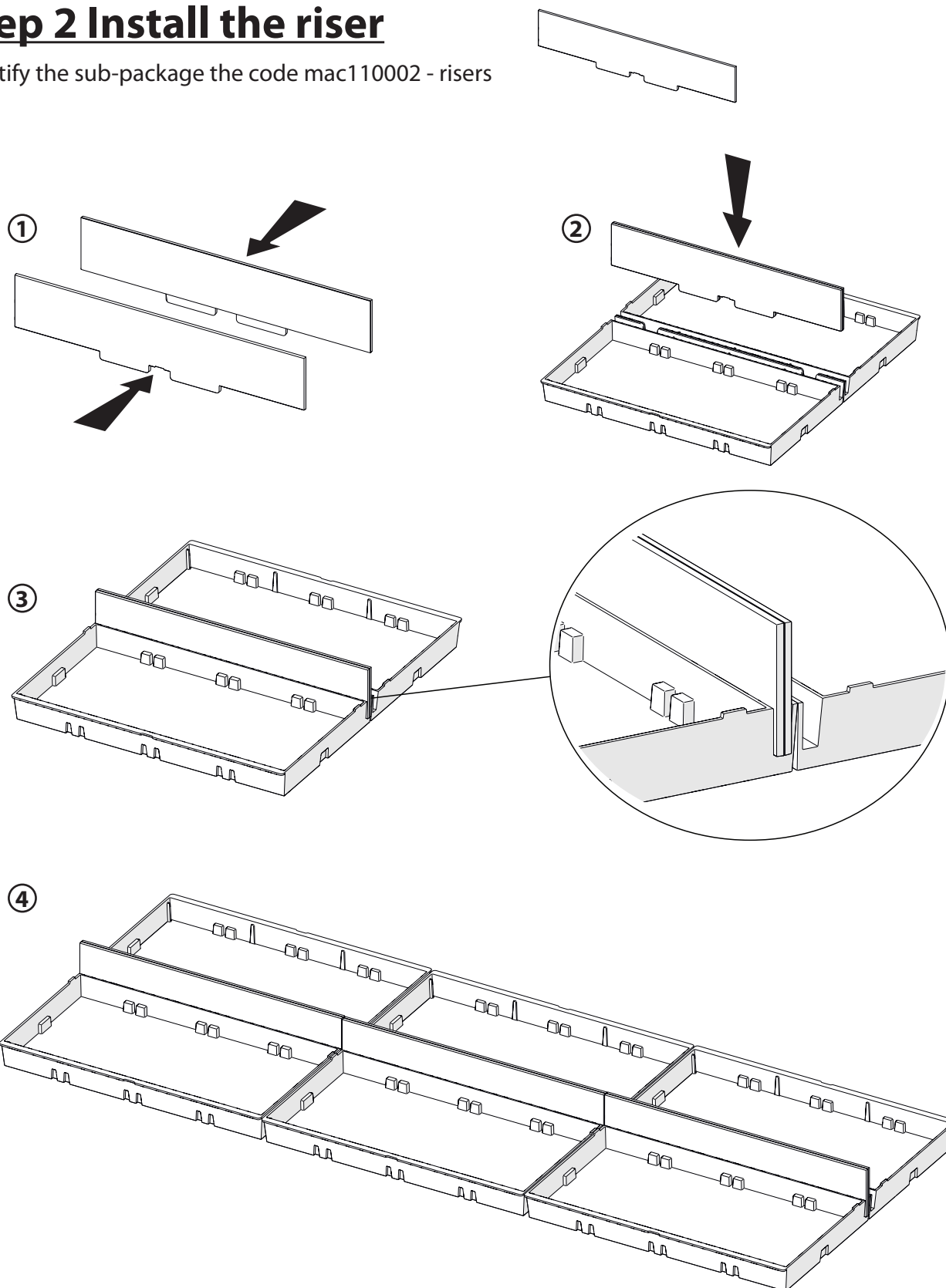




INSTRUCTION SHEET

Step 2 Install the riser

identify the sub-package the code mac110002 - risers





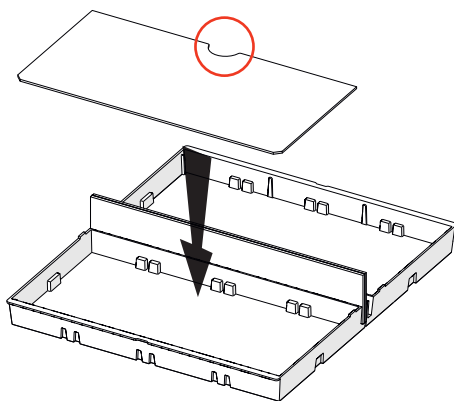
INSTRUCTION SHEET

Step 3 Install the inserts

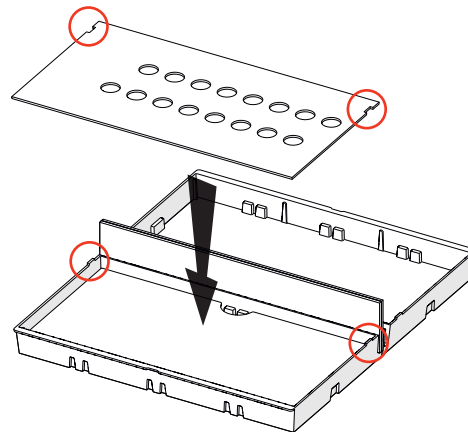
Identify the sub-package with all the inserts then open your planogram, identify the references and place each insert in the trays on the correct location

- ① Some references require a cardboard plate to support the products. When you open the sub packaging of 1 reference, always start to fill the trays with this black cardboard template (if inside the subpackaging)

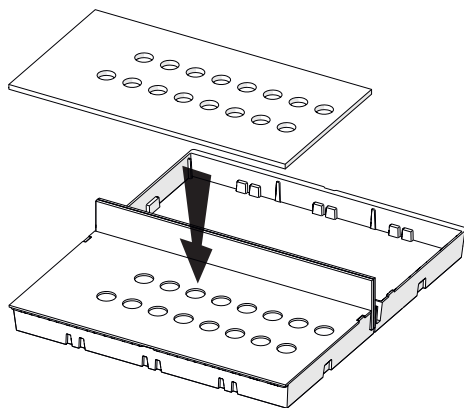
Put inside the tray - present the template as shown on the visual, mind the hole is on back side



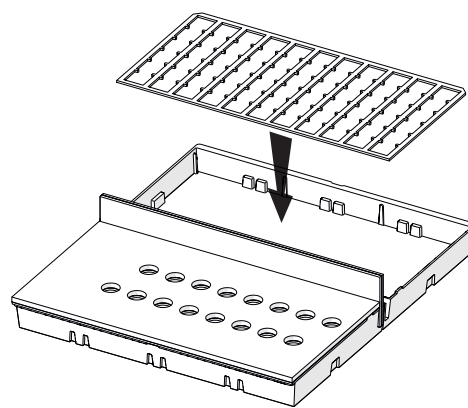
- ② Insert on the tray the thin clear template. Mind the 2 notches on left and right sides - to place at the right place on the tray (2 brackets)



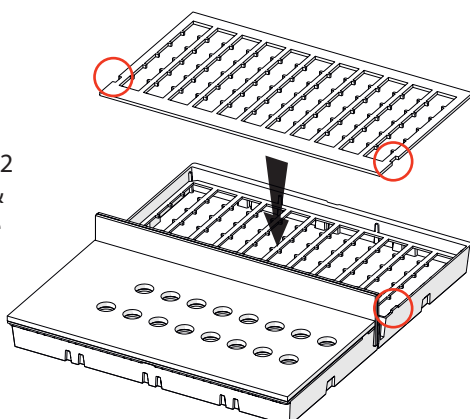
- ③ Cover with the top thick clear template. You will add the graphic inserts in a second time - once all lineup is installed



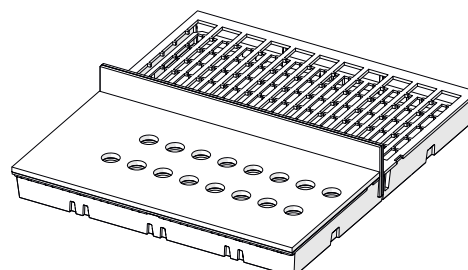
- ④ Storage part is always a mix of a black template and in some case a clear template. Black template always sits on top, the clear template has two cut corners that must be oriented on the back.



- ⑤ When installing the black top, please mind the 2 notches on left & right sides of the black template - locate them correctly on the tray



⑥



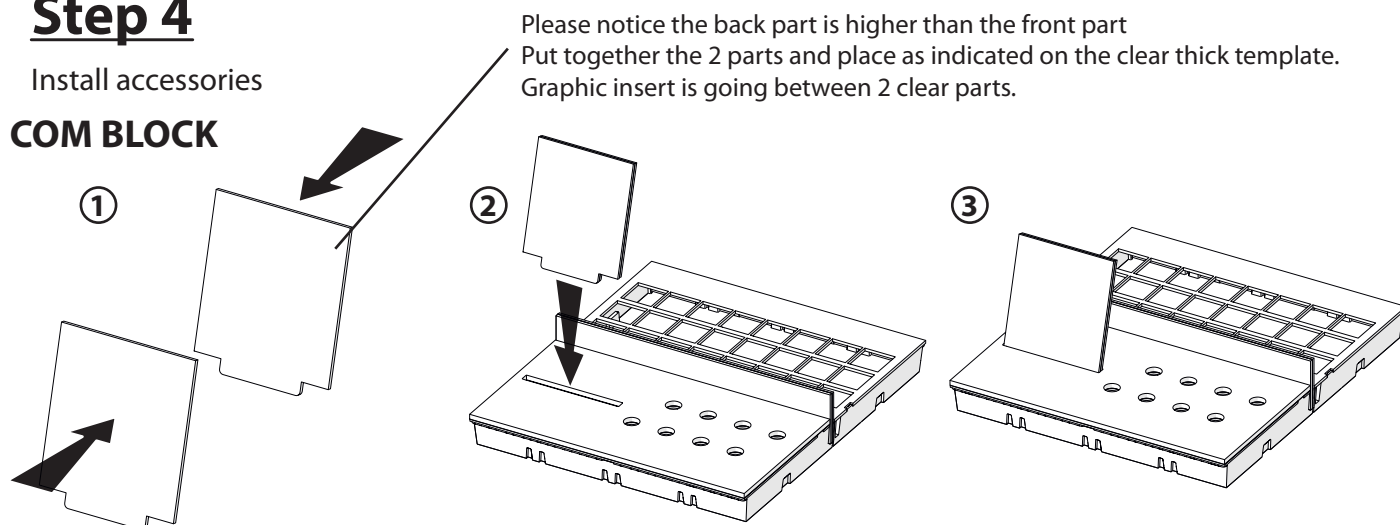


INSTRUCTION SHEET

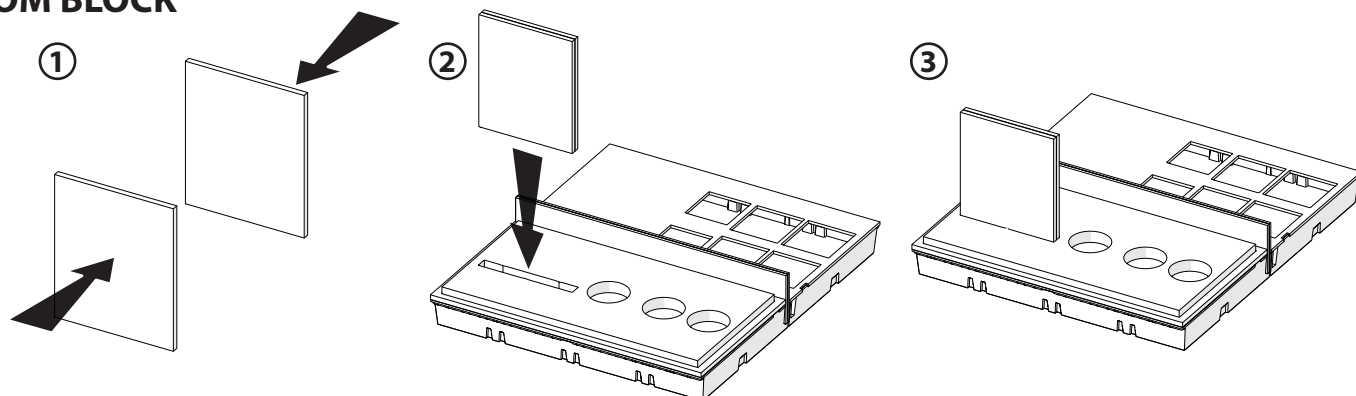
Step 4

Install accessories

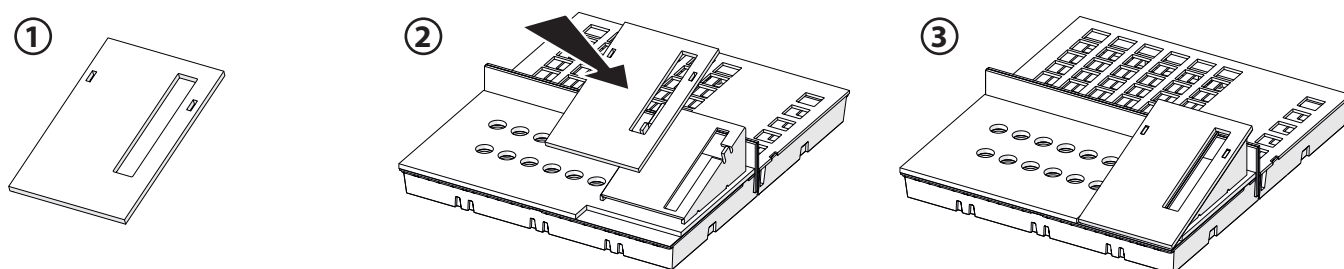
COM BLOCK



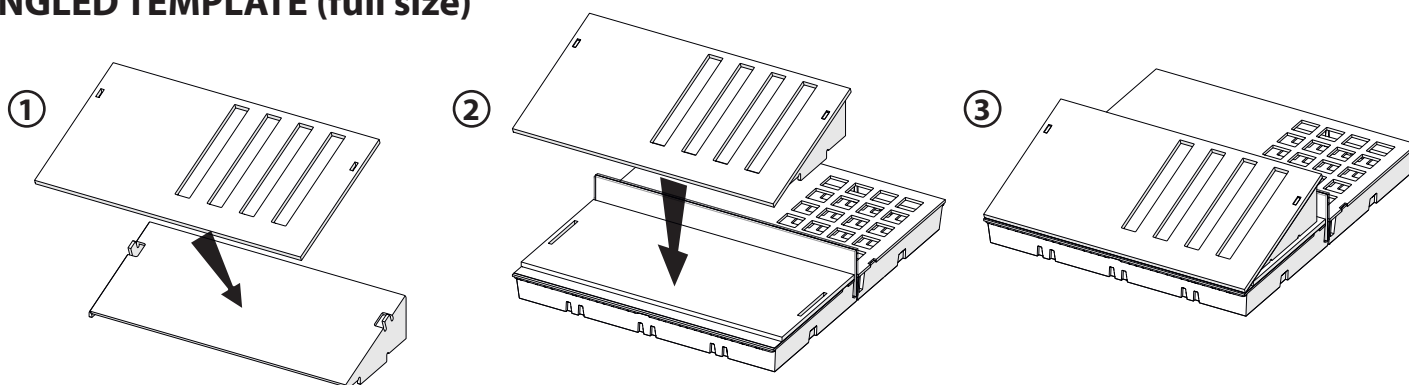
COM BLOCK



ANGLED TEMPLATE (1/3 size)



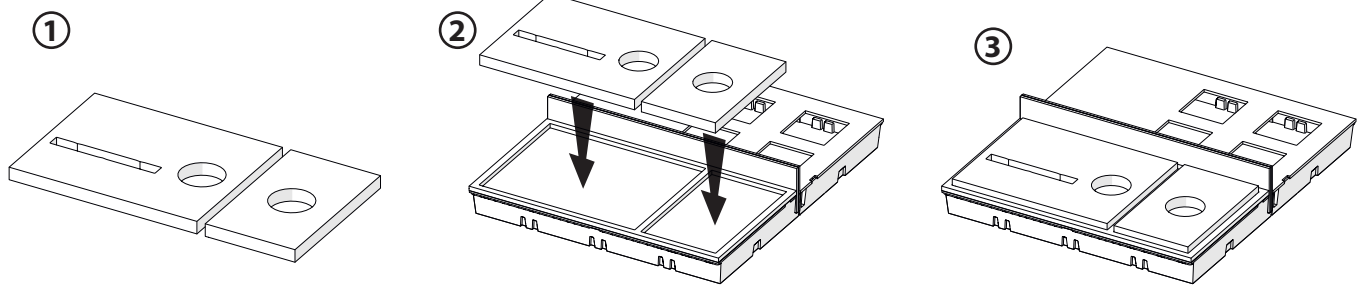
ANGLED TEMPLATE (full size)



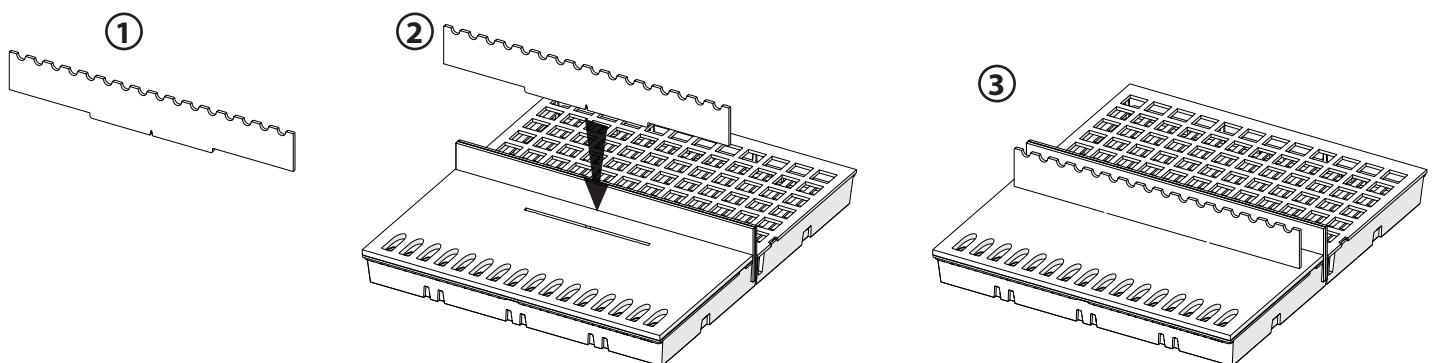
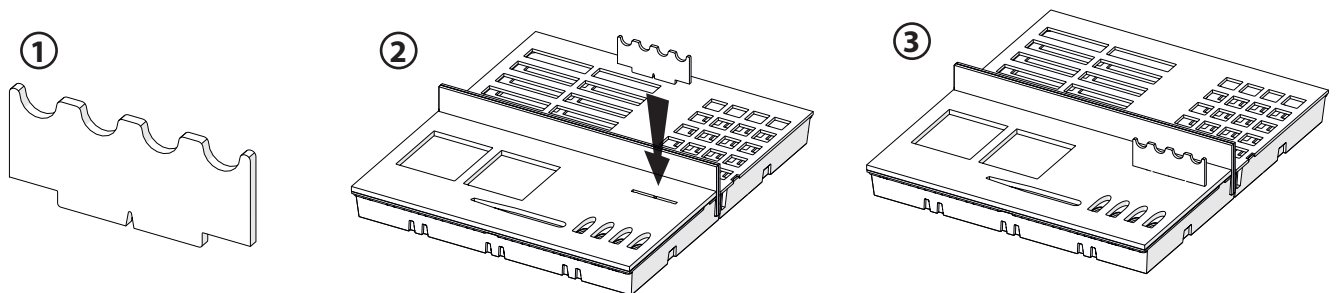
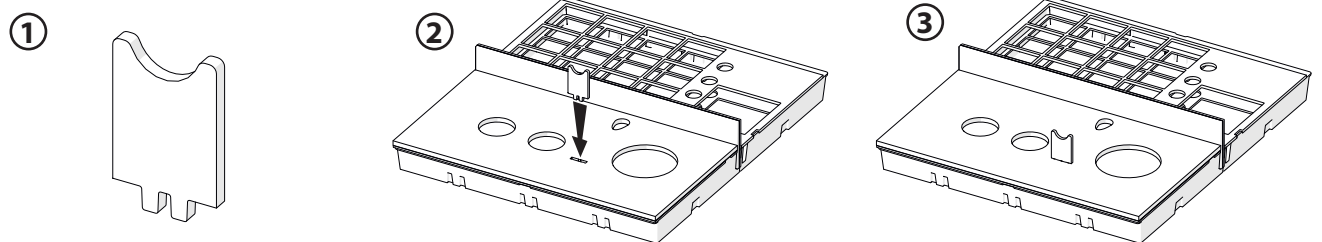


INSTRUCTION SHEET

PODIUMS



PRODUCTS SUPPORTS



CLEANSERS SUPPORT

